

# Swann-Morton®

ONE OF THE WORLD'S LEADING SURGICAL BLADE MANUFACTURERS

## Stitch Cutter

Convenient and cost effective our range of Sterile Stitch Cutters are ideal for use in 'Out Patient clinics', within 'Accident and Emergency departments', on 'Hospital Wards', in 'General Practice' and for 'Nursing in the Community'.

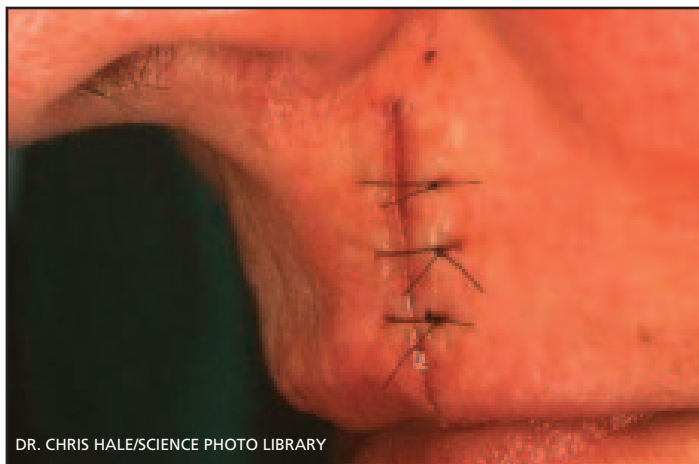
Skin sutures generally are removed from five to eight days after application, with sutures on the neck or face generally being removed slightly sooner.

Absorbable sutures lose enough strength in that period that they can often be removed without cutting, but non-absorbables will need to be cut out.

**Although the Stitch Cutters are simple to use it is essential that all staff are both familiar and confident in using them.**



MARK CLARKE/SCIENCE PHOTO LIBRARY



DR. CHRIS HALE/SCIENCE PHOTO LIBRARY

- 1 If necessary clean the area thoroughly with an appropriate solution. Hold the free end of the suture then slide under the Stitch Cutter so it lies flat to the patients skin.
- 2 Rotate the stitch cutter gently upwards so that the cutting edge contacts the suture material as close as possible to where it enters the skin.
- 3 Gently pull the suture out ensuring that the section which has been exposed to the outside world is not drawn through the wound thus introducing potential contamination and an increased risk of post infection.

## Stitch Cutter Blades - Sterile

Requiring no handles, the Standard Stitch Cutter is in Carbon Steel, the Midi and Long version in Stainless Steel. Available individually foil-wrapped in sterile pack of 100.



Scan this code for more product information

Swann-Morton and the 'ring pattern' logo are registered trademarks of Swann-Morton Limited and related companies. The products shown are manufactured for use by trained health care professionals and can cause injury if used or handled incorrectly. The information and illustrations used in connection with the products shown on this leaflet are for general guidance only and users must seek proper training and instruction in their use before using or handling such products. Swann-Morton Limited exclude all liability for injury to the extent permitted by law.

**Swann-Morton®**  
SHEFFIELD ENGLAND

Swann-Morton Ltd. Penn Works, Owlerton Green, Sheffield S6 2BJ

Telephone: +44 (0)114 2344231 Email: [info@swann-morton.com](mailto:info@swann-morton.com)

[www.swann-morton.com](http://www.swann-morton.com)

STC/ISSUE 1 01/23