

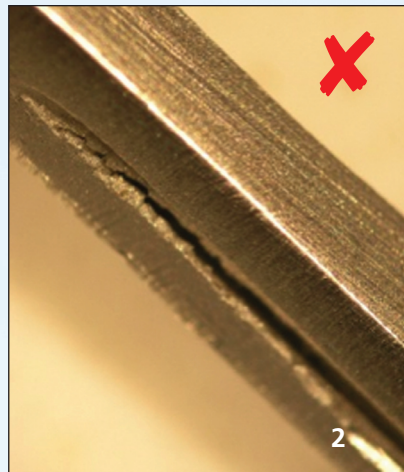
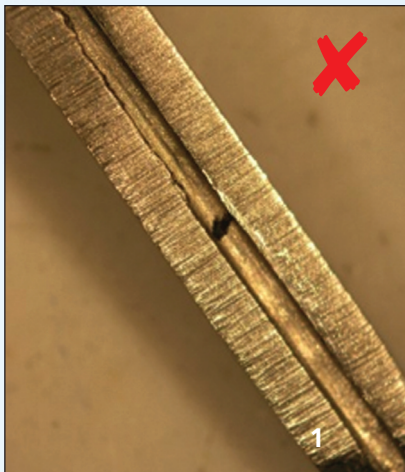
Blades should never be fitted to handles with worn or damaged fitments.

How to check whether your handles are fit for purpose?

- 1 Perform a visual check for burrs or metal fragments within the fitment slot of the handle as this may prevent the blade fitting correctly.
- 2 Check to ensure the handle is reusable and does not display a single use symbol unless new and straight out of a custom pack. Make sure single use handles are disposed of after the procedure in line with Hospital protocols.
- 3 Check the fitment slots for evidence of damage after each cleaning cycle.

Blades should never be fitted to handles with damaged or worn fitments as they may not fully engage with or support the blade and there is a risk it may detach whilst in use thus compromising the safety of staff and their patients.

The fitment dimensions of all surgical handles should be in strict compliance with BS EN 27740 and ISO 7740.

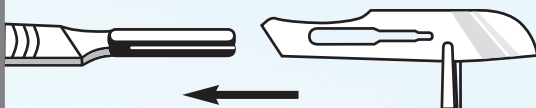


Images 1 and 2 supplied by Tom Brophy, Lead Technologist, The Royal London Hospital, Barts Health NHS Trust.

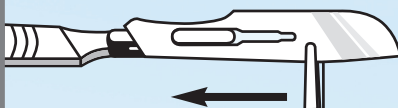
Attaching a surgical blade

Use the following procedure to **attach** a surgical blade:

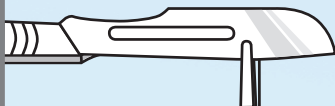
- 1 Grip blade with forceps, or similar, avoiding contact with cutting edge.
- 2 Hold handle in left hand with bayonet fitting uppermost.



- 3 Place blade partway over handle fitting and engage slots.
- 4 Slide blade until it clicks into position.



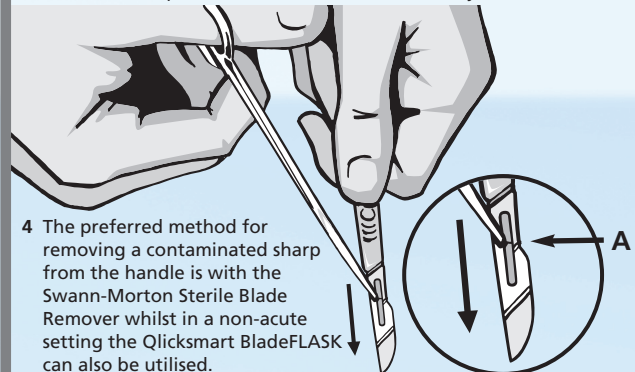
- 5 To improve assembly, flex blade slightly upwards when sliding onto the handle.



Removing a surgical blade

Use the following procedure to **detach** a surgical blade:

- 1 Grip the blade with forceps or needle holders at point A making sure that the cutting edge is facing away from the hand and body.
- 2 Ensure the blade is pointing downwards and towards the trolley and NOT towards another member of your team.
- 3 Whilst holding the handle firmly lift the back edge of the blade with the forceps or needle holders and slide away the handle.



- 4 The preferred method for removing a contaminated sharp from the handle is with the Swann-Morton Sterile Blade Remover whilst in a non-acute setting the Qlicksmart BladeFLASK can also be utilised.

Swann-Morton and the 'ring pattern' logo are registered trademarks of Swann-Morton Limited and related companies. The products shown are manufactured for use by trained health care professionals and can cause injury if used or handled incorrectly. The information and illustrations used in connection with the products shown on this leaflet are for general guidance only and users must seek proper training and instruction in their use before using or handling such products. Swann-Morton Limited exclude all liability for injury to the extent permitted by law.

Swann-Morton[®]
Sheffield - England

Swann-Morton Ltd. Penn Works, Owlerton Green, Sheffield S6 2BJ
Telephone: 0114 2344231, Sales 0114 2344223
uksales@swann-morton.com, exportsales@swann-morton.com
orders@swann-morton.com, www.swann-morton.com