

# Quick 'n' Safe

Click-on... Slip-off



## Blade Removal & Disposal

**Surgical Blade Remover**  
Single Use, Sterile  
or Non-sterile

Introduce the blade into the blade remover as shown and close the blade remover, ensuring that both sets of lugs indicated at **2** and **3** engage with a click.

Continue to hold the blade remover firmly between thumb and forefinger in the central position and simply withdraw the handle.

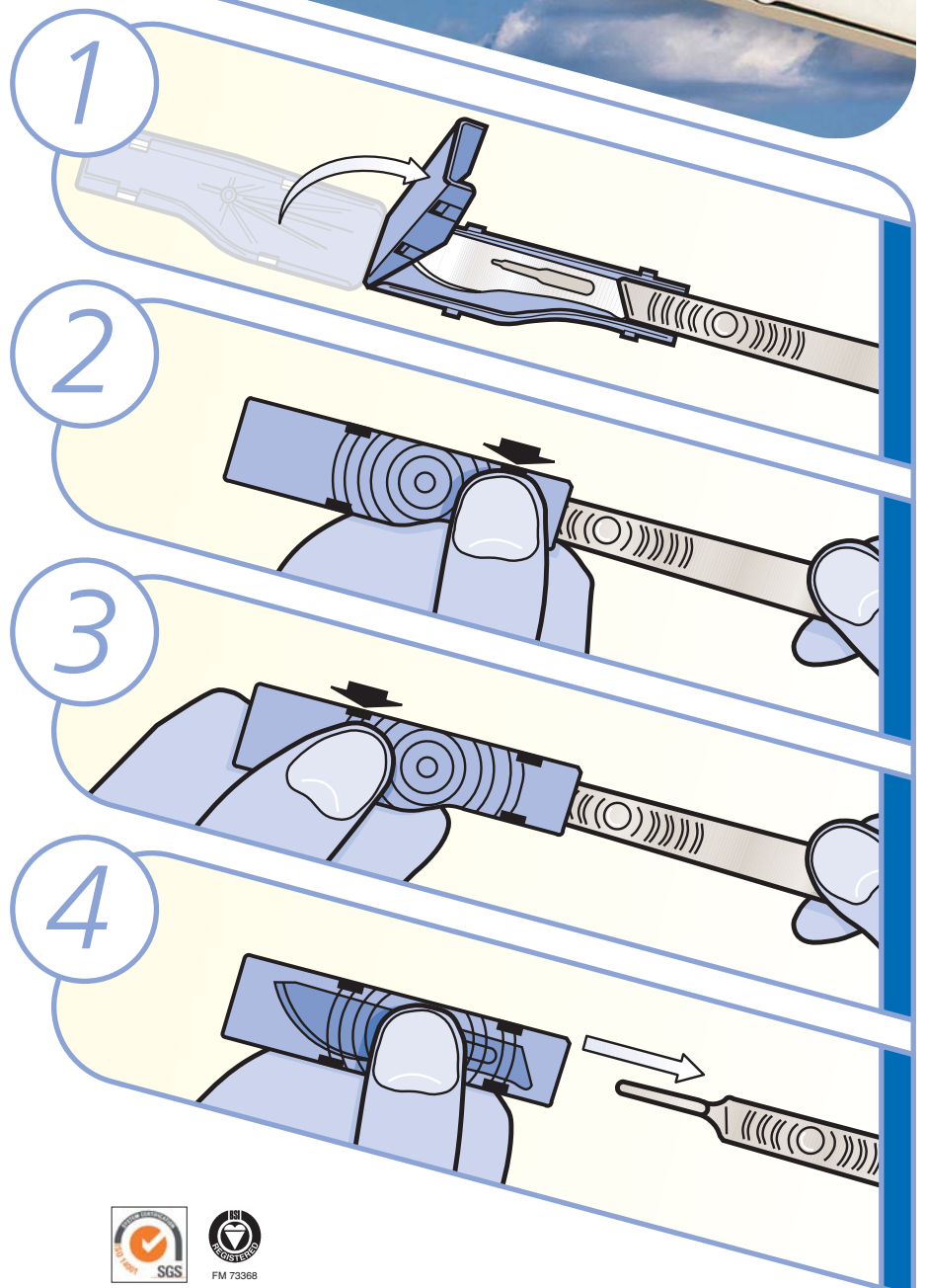
Available sterile in boxes of 50,  
non-sterile in boxes of 100.

For use with No. 3 and 4  
fitment blades.

**Swann-Morton®**  
PRECISION IN YOUR HANDS

Swann-Morton Limited, Owlerton Green  
Sheffield S6 2BJ, England

Tel: 0114 234 4231 Fax: 0114 231 4966  
Email: [uksales@swann-morton.com](mailto:uksales@swann-morton.com)  
[exportsales@swann-morton.com](mailto:exportsales@swann-morton.com)



[www.swann-morton.com](http://www.swann-morton.com)