

Swann-Morton®

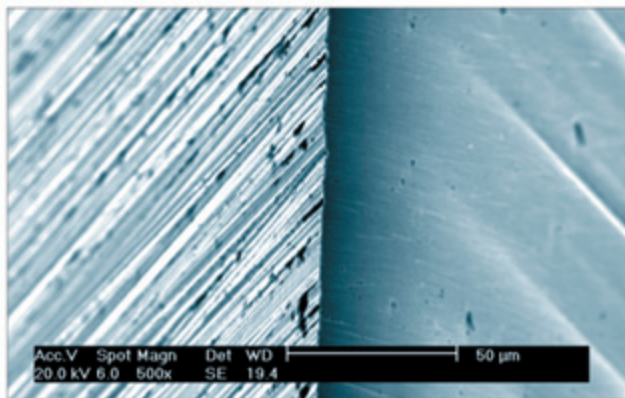
THE WORLD'S LEADING SURGICAL BLADE MANUFACTURER

Take a closer look at some of the effects of 'careless' handling

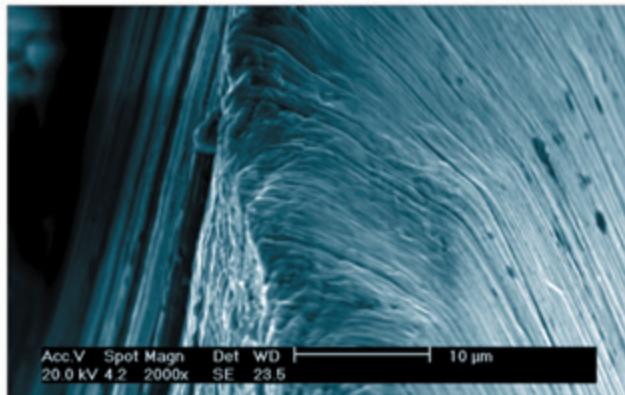
Here are a few observations which you may wish to try and identify in your own working environment and maybe you can help us to help yourself and your colleagues to reduce the occurrence of such problems in the future.

BEFORE USE

PRISTINE SCALPEL BLADE EDGE



DROPPED ONCE INTO METAL TRAY

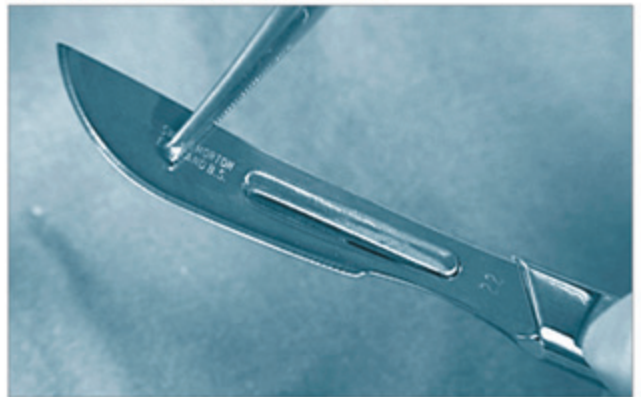


1 When removing the blade from the protective foil packet make sure it is not dropped into a metal bowl or container for this can remove the initial "keenness" of the cutting edge before it has been fitted to the handle.

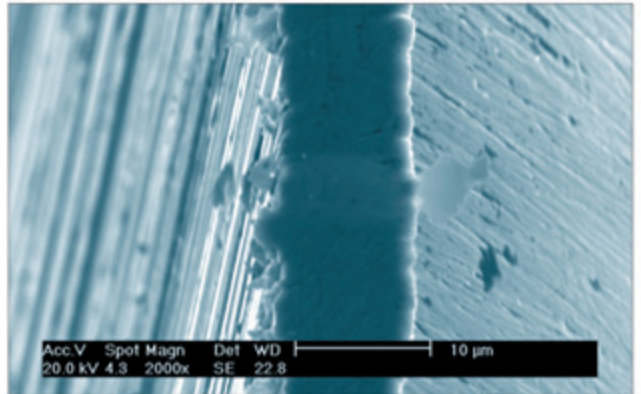
2 If you have forceps or needle holders to remove the blade from its protective foil packet then make sure that you DO NOT grip the blade across the cutting edge.

3 The same is applicable if picking up the blade with forceps or using them to fit the blade to the corresponding surgical handle.

FITTING THE SURGICAL BLADE



AFTER SCUFFING ON METAL TRAY



4 Bringing the cutting edge into contact with any metallic objects or instruments before or during usage, such as scissors, forceps, trays, dishes etc. can have the same detrimental effect on the blade.

DURING USE

- 1 Contact with bone
- 2 Cutting through granular tissue
- 3 Lateral pressure

Swann-Morton and the 'ring pattern' logo are registered trademarks of Swann-Morton Limited and related companies. The products shown are manufactured for use by trained health care professionals and can cause injury if used or handled incorrectly. The information and illustrations used in connection with the products shown on this leaflet are for general guidance only and users must seek proper training and instruction in their use before using or handling such products. Swann-Morton Limited exclude all liability for injury to the extent permitted by law.

Swann-Morton®
Sheffield - England

Swann-Morton Ltd. Penn Works, Owlerton Green, Sheffield S6 2BJ
Telephone: 0114 2344231, Sales 0114 2344223, Fax: 0114 2314966
uksales@swann-morton.com, exportsales@swann-morton.com
orders@swann-morton.com, www.swann-morton.com